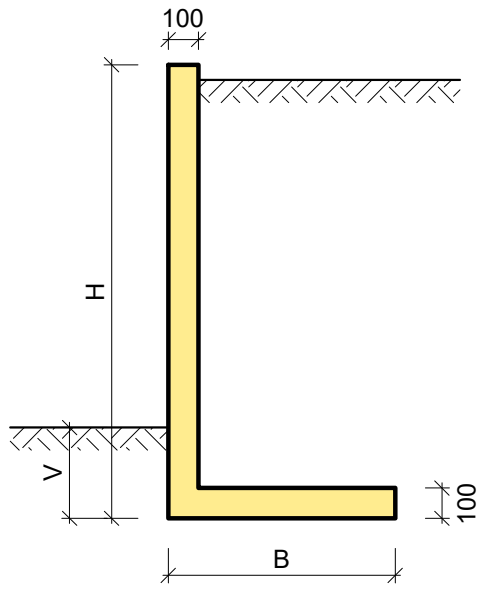


## Opěrná zed' A

H = 500-1500 mm



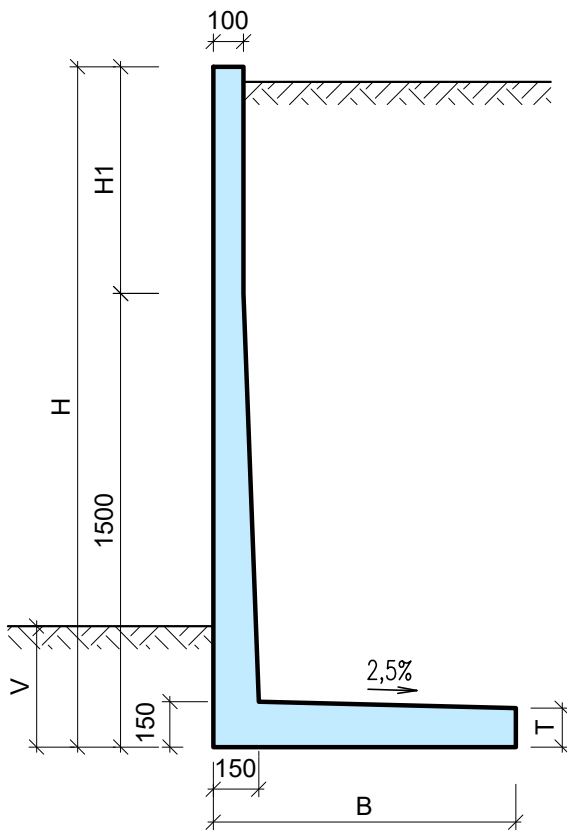
# TYPY OPĚRNÝCH ZDÍ

TYP	H (mm)	B (mm)	V (mm)	m (t)
<b>A</b>	500	400	100	0,20
	750	400	200	0,26
	750	600	200	0,31
	1000	400	300	0,33
	1000	600	300	0,38
	1000	800	300	0,43
	1250	600	300	0,44
	1250	800	300	0,49
	1250	1000	300	0,54
	1500	600	400	0,50
	1500	800	400	0,55
	1500	1000	400	0,60
	1500	1200	400	0,65

B \ H	400	600	800	1000	1200
500	*				
750	*	*			
1000	*	*	*		
1250		*	*	*	
1500		*	*	*	*

## Opěrná zed' B

H = 1750-2250 mm

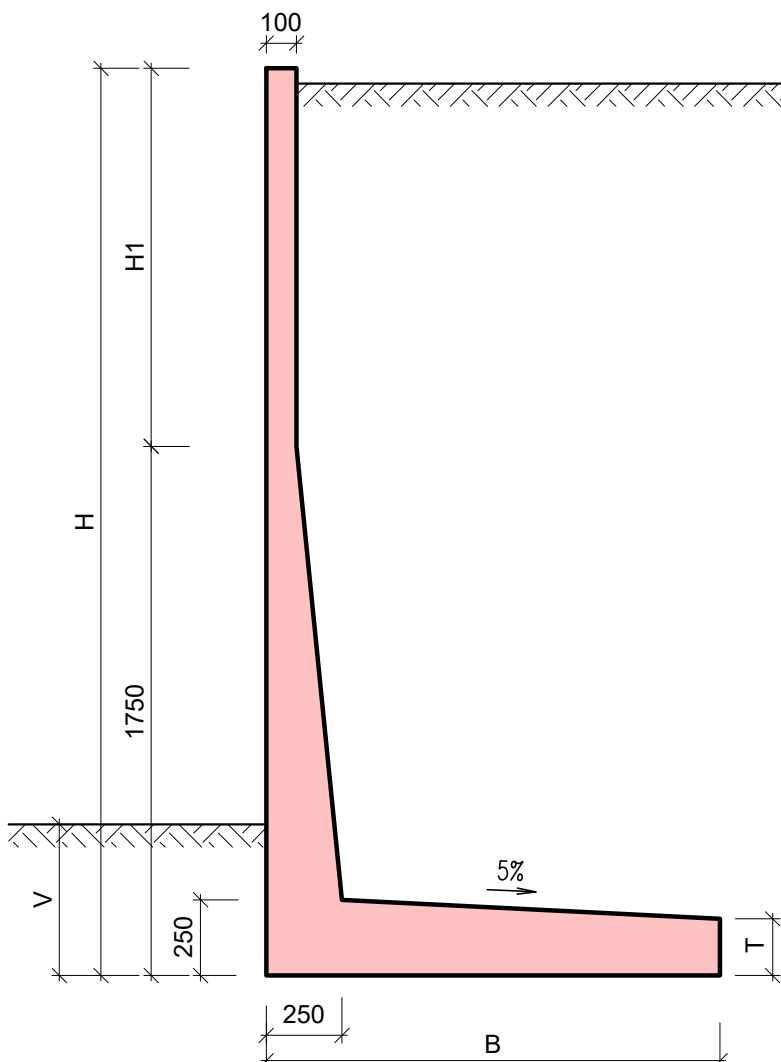


TYP	H (mm)	B (mm)	H1 (mm)	T (mm)	V (mm)	m (t)
<b>B</b>	1750	750	250	135	400	0,75
	1750	950	250	130	400	0,82
	1750	1150	250	125	400	0,88
	1750	1350	250	120	400	0,95
	2000	950	500	130	500	0,88
	2000	1150	500	125	500	0,95
	2000	1350	500	120	500	1,01
	2000	1550	500	115	500	1,07
	2250	950	750	130	500	0,95
	2250	1150	750	125	500	1,01
	2250	1350	750	120	500	1,07
	2250	1550	750	115	500	1,13
	2250	1750	750	110	500	1,19
	2500	1150	1000	125	500	1,07
	2500	1350	1000	120	500	1,13
	2500	1550	1000	115	500	1,19
	2500	1750	1000	110	50	1,25

B \ H	750	950	1150	1350	1550	1750
1750	*	*	*	*		
2000		*	*	*	*	
2250		*	*	*	*	*
2500			*	*	*	*

## Opěrná zed' C

H = 2500-3000 mm



TYP	H (mm)	B (mm)	H1 (mm)	T (mm)	V (mm)	m (t)
<b>C</b>	2750	1250	1000	200	500	1,63
	2750	1450	1000	190	500	1,72
	2750	1650	1000	180	500	1,82
	2750	1850	1000	170	500	1,90
	3000	1450	1250	190	500	1,79
	3000	1650	1250	180	500	1,88
	3000	1850	1250	170	500	1,97
	3000	2050	1250	160	500	2,05
	3000	2250	1250	150	500	2,13
	3000	2450	1250	140	500	2,20
	3250	1450	1500	190	500	1,85
	3250	1650	1500	180	500	1,94
	3250	1850	1500	170	500	2,03
	3250	2050	1500	160	500	2,11
	3250	2250	1500	150	500	2,19

B \ H	1050	1250	1450	1650	1850	2050	2250
2750		*	*	*	*		
3000		*	*	*	*	*	
3250			*	*	*	*	*